

MAGNETIC DECLINATION
3° 20' WEST
MAY, 2018
ANNUAL CHANGE 0° 0' WEST

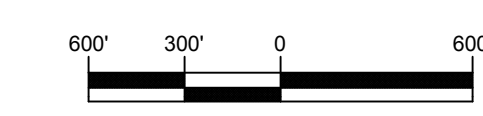
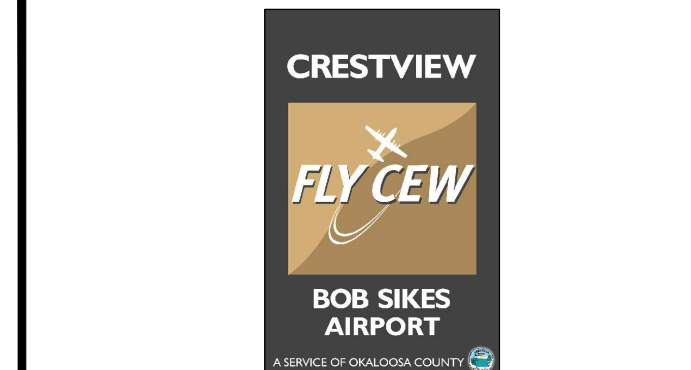


PHOTO DATE: NOVEMBER 2017
PHOTO BY: GPI GEOSPATIAL, INC.



BOB SIKES AIRPORT
CRESTVIEW, FLORIDA



RS&H, Inc.
10748 Deerwood Park Blvd South
Jacksonville, Florida 32256
904-256-2500 FAX 904-256-2501
www.rsandh.com

AIRPORT LAYOUT PLAN

CONSULTANTS

REVISIONS

NO.	DESCRIPTION	DATE

DATE ISSUED: FEBRUARY 2019
REVIEWED BY: GRH, KRI, TJM
DRAWN BY: JEM
DESIGNED BY: JEM

PROJECT NUMBER
201-0251-005
© 2019 RS&H, INC.

SHEET TITLE

FACILITIES LAYOUT

SHEET NUMBER

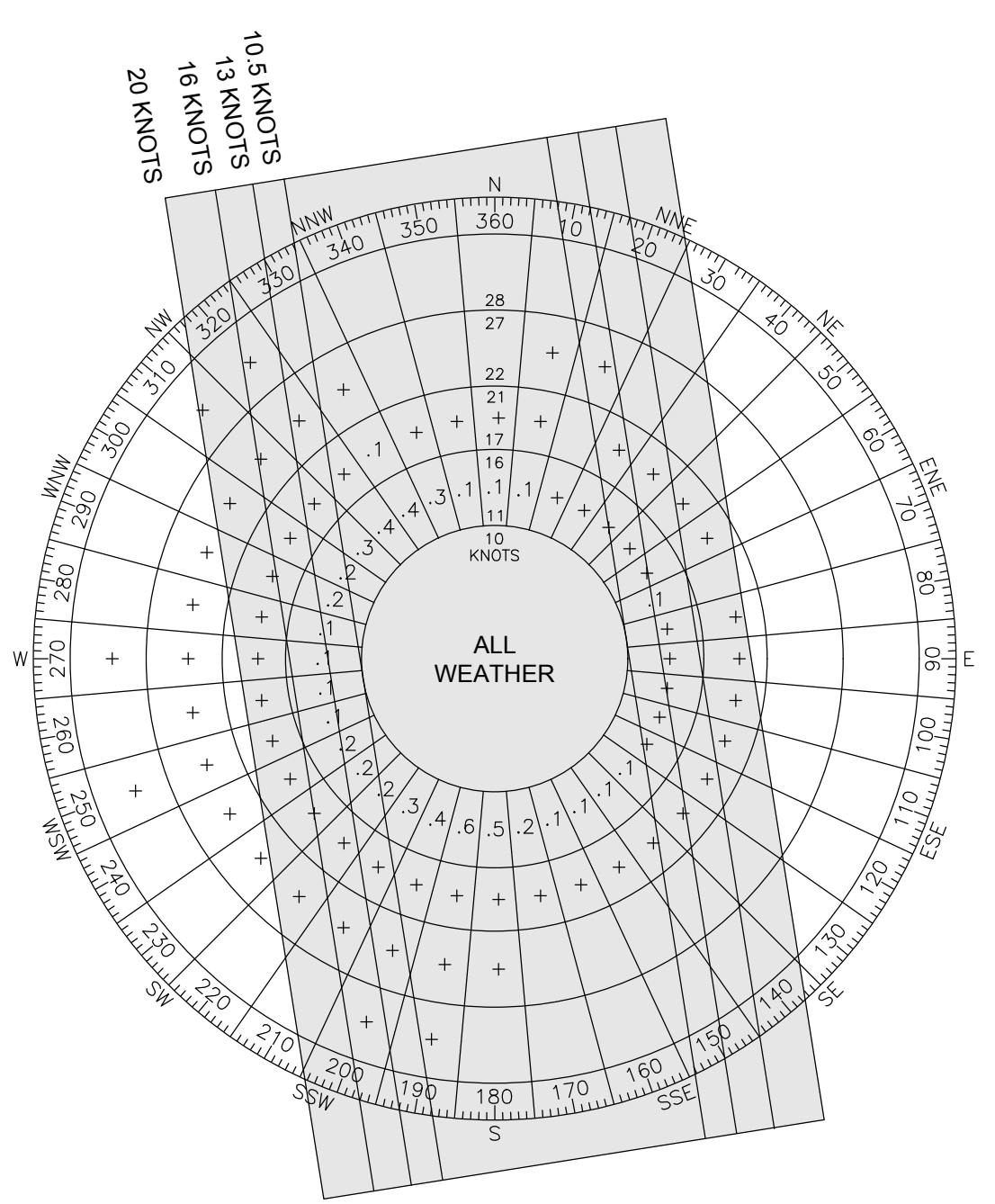
DRAFT

DESCRIPTION	EXISTING	FUTURE	ULTIMATE
	PROPERTY LINE	---	---
RUNWAY SAFETY AREA	RSA		N/A
RUNWAY OBJECT FREE AREA	ROFA		N/A
RUNWAY OBSTACLE FREE ZONE	ROFZ		N/A
RUNWAY PROTECTION ZONE			
TAXIWAY SAFETY AREA	TSA		N/A
TAXIWAY OBJECT FREE AREA	TOFA		N/A
35' BUILDING RESTRICTION LINE	BRL		N/A
PART 77 SURFACE	77		N/A
VASI	☒		N/A
PAPI	N/A	☐	
AIRPORT REFERENCE POINT	⊗		N/A
AIRPORT BEACON	★		N/A
ASOS	●		N/A
AIRFIELD PAVEMENT	N/A		▨
BUILDING	N/A		▨
BUILDING TO BE REMOVED	N/A		▨
ROADWAY/PARKING	N/A		▨

BUILDING NO	BUILDING DESCRIPTION
1	HANGAR
2	HANGAR
3	HANGAR
4	AIRPORT OFFICES
5	AIRFF STATION
6	HANGARS
7	FBO TERMINAL
8	HANGAR
9	HANGAR
10	HANGAR
11	HANGAR
12	HANGAR
13	HANGAR
14	HANGAR
15	HANGAR
16	HANGAR
17	STORAGE
18	HANGAR

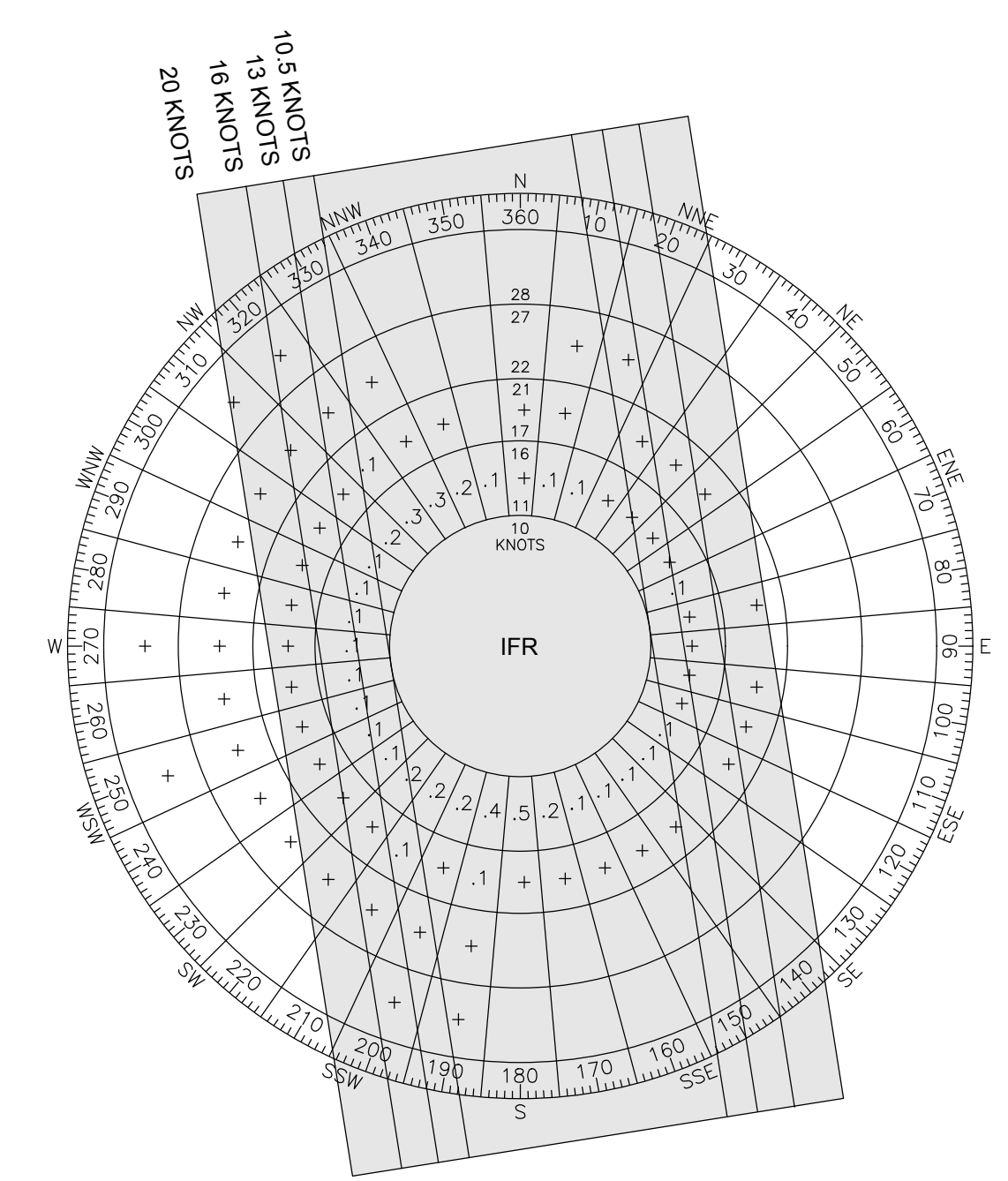
BUILDING NO	BUILDING DESCRIPTION
F1	T-HANGAR
F2	T-HANGAR
F3	HANGAR
F4	HANGAR
F5	HANGAR

BUILDING NO	BUILDING DESCRIPTION
U1	HANGAR
U2	HANGAR
U3	HANGAR
U4	HANGAR
U5	HANGAR
U6	HANGAR
U7	HANGAR
U8	HANGAR



RUNWAY	10.5 KNOTS	13 KNOTS	16 KNOTS	20 KNOTS
17-35	98.30%	99.22%	99.85%	99.97%

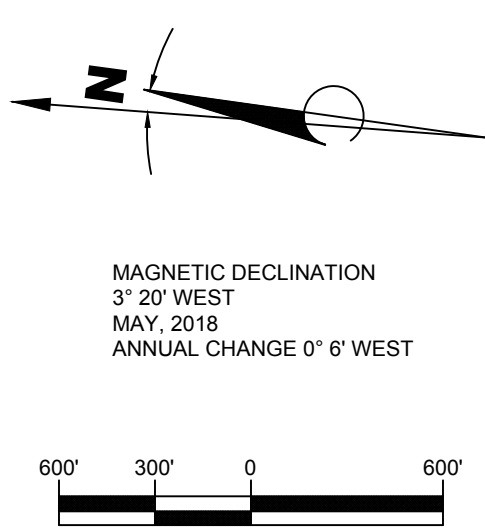
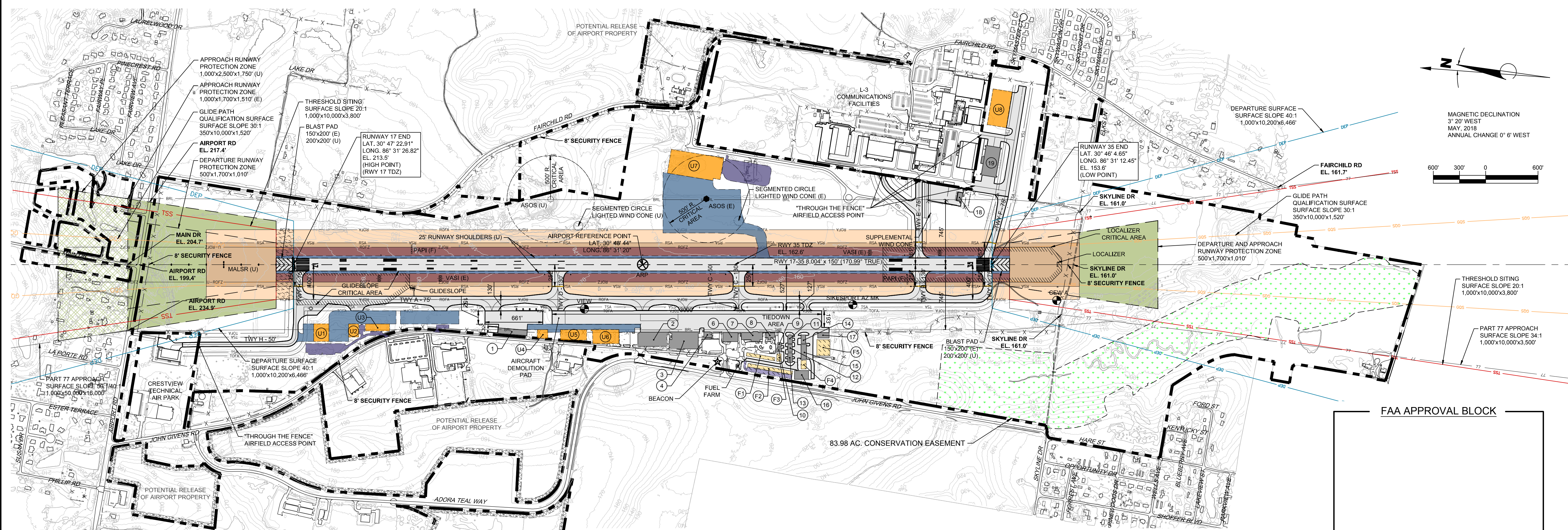
ALL WEATHER OBSERVATIONS: 122,859



RUNWAY	10.5 KNOTS	13 KNOTS	16 KNOTS	20 KNOTS
17-35	98.27%	99.08%	99.72%	99.91%

IFR OBSERVATIONS: 32,097

DATA SOURCE: NOAA NATIONAL CLIMATIC DATA CENTER
STATION: BOB SIKES AIRPORT - ASOS
DATA RANGE: 2008 - 2017



CRESTVIEW
FLY CEW
BOB SIKES AIRPORT
A SUBDIVISION OF ORANGE COUNTY, FLORIDA

BOB SIKES AIRPORT
CRESTVIEW, FLORIDA



RS&H, Inc.
10748 Deerwood Park Blvd South
Jacksonville, Florida 32256
904-256-2500 FAX 904-256-2501
www.rsandh.com

AIRPORT LAYOUT PLAN

CONSULTANTS

ABBREVIATIONS:

- AGL ABOVE GROUND LEVEL
- ARP AIRPORT REFERENCE POINT
- ASDA ACCELERATE STOP DISTANCE AVAILABLE
- ASOS AUTOMATED SURFACE OBSERVING SYSTEM
- DEP DEPARTURE
- DME DISTANCE MEASURING EQUIPMENT
- 2D DUAL-TANDM WHEEL GEAR AIRCRAFT
- D DUAL WHEEL GEAR AIRCRAFT
- E EXISTING CONDITIONS
- EST ESTIMATED
- F FUTURE CONDITIONS
- (PROGRAMMED IN THE ACIP)
- GPS GLOBAL POSITIONING SYSTEM
- GS GLIDESLOPE
- IFR INSTRUMENT FLIGHT RULES
- ILS INSTRUMENT LANDING SYSTEM
- LDA LANDING DISTANCE AVAILABLE
- LOC LOCALIZER
- MALSIR MEDIUM INTENSITY APPROACH LIGHTING SYSTEM WITH RUNWAY ALIGNMENT INDICATOR LIGHTS
- MIRL MEDIUM INTENSITY RUNWAY LIGHTS
- MITL MEDIUM INTENSITY TAXIWAY LIGHTS
- MSL MEAN SEA LEVEL
- NDB NONDIRECTIONAL BEACON
- NGS NATIONAL GEODETIC SURVEY
- NPI NON-PRECISION INSTRUMENT
- PAPI PRECISION APPROACH PATH INDICATOR
- PIR PRECISION INSTRUMENT RUNWAY AREA NAVIGATION
- RNAV SINGLE WHEEL GEAR AIRCRAFT TAKEOFF DISTANCE AVAILABLE
- S TAKEOFF RUN AVAILABLE
- TORA TAKEOFF SLOPE SURFACE
- TSS VISUAL APPROACH SLOPE INDICATOR
- VASI VISUAL APPROACH SLOPE INDICATOR
- VOR VERY HIGH FREQUENCY OMNIDIRECTIONAL RANGE
- U ULTIMATE CONDITIONS (BEYOND THE PLANNING HORIZON)

GENERAL NOTES

- ALL COORDINATES ARE IN NORTH AMERICAN DATUM OF 1983 (NAD 83).
- ALL ELEVATIONS ARE IN NORTH AMERICAN VERTICAL DATUM OF 1988 (NAVD 88).
- ALL ELEVATIONS EXPRESSED IN FEET ABOVE MEAN SEA LEVEL (MSL).
- ALL PROJECTS DEPICTED AS FUTURE ARE FORECASTED AND PROGRAMMED ON THE AIRPORT CAPITAL IMPROVEMENT PROGRAM.
- ALL PROJECTS DEPICTED AS ULTIMATE ARE ONLY FORECASTED.

AIRPORT DATA TABLE		
	EXISTING	FUTURE
AIRPORT REFERENCE CODE	C-IV	
MEAN MAXIMUM TEMPERATURE / HOTTEST MONTH	92° / JULY	
AIRPORT ELEVATION (NAVD 88)	213.5'	
AIRPORT NAVIGATIONAL AIDS	VOR, NDB, BEACON	
AIRPORT REFERENCE POINT (NAD 83)	LAT. 30° 46' 44"	
	LONG. 86° 31' 20"	
MISCELLANEOUS FACILITIES	SEGMENTED CIRCLE WITH LIGHTED WIND CONE, SUPPLEMENTAL WIND CONE, ASOS	SAME
AIRPORT REFERENCE CODE AND CRITICAL AIRCRAFT	C-IV / C-130	
MAGNETIC VARIATION	3° 20' ± 20'	
	MAY 2018	
NPIAS SERVICE LEVEL	GA - REGIONAL	
STATE EQUIVALENT SERVICE ROLE	GENERAL AVIATION	

SURVEY MONUMENTS					
IDENTIFIER	NGS PID	PACS OR SACS	LATITUDE	LONGITUDE	ELEVATION
VIEW	BG5100	PACS	30° 46' 49.542"	86° 31' 26.559"	169.2'
CEW A	AE8011	SACS	30° 45' 56.777"	86° 31' 15.738"	152.3'
SIKESPORT AZ MK	BG4888	SACS	30° 46' 19.553"	86° 31' 20.463"	157.5'

SOURCE: THE NATIONAL GEODETIC SURVEY INFORMATION CENTER, NAD (2011), NAVD 88

DECLARED DISTANCES					
RUNWAY	END	TORA	TODA		LDA
			EXISTING	FUTURE	
RUNWAY 17	END	8,004'	8,004'	8,004'	8,004'
			8,004'	8,004'	8,004'
RUNWAY 35	END	8,004'	8,004'	8,004'	8,004'
			8,004'	8,004'	8,004'

EXISTING BUILDING LEGEND	
BUILDING NO	BUILDING DESCRIPTION
1	HANGAR
2	HANGAR
3	HANGAR
4	AIRPORT OFFICES
5	AIRFF STATION
6	HANGAR
7	FBO TERMINAL
8	HANGAR
9	HANGAR
10	HANGAR
11	HANGAR
12	HANGAR
13	HANGAR
14	HANGAR
15	HANGAR
16	HANGAR
17	STORAGE
18	HANGAR

FUTURE BUILDING LEGEND	
BUILDING NO	BUILDING DESCRIPTION
F1	T-HANGAR
F2	T-HANGAR
F3	HANGAR
F4	HANGAR
F5	HANGAR

ULTIMATE BUILDING LEGEND	
BUILDING NO	BUILDING DESCRIPTION
U1	HANGAR
U2	HANGAR
U3	HANGAR
U4	HANGAR
U5	HANGAR
U6	HANGAR
U7	HANGAR
U8	HANGAR

	RUNWAY DATA TABLE			
	EXISTING	17 FUTURE	35 FUTURE	ULTIMATE
RUNWAY DESIGN CODE (RDC)	C-IV-4000	C-IV-2400	C-IV-5000	
APPROACH REFERENCE CODE (APRC)	D-IV-4000	D-IV-2400	D-IV-5000	
DEPARTURE REFERENCE CODE (DPRC)	D-V	D-V	D-V	
PAVEMENT SURFACE	ASPHALT	ASPHALT	ASPHALT	
SURFACE TREATMENT	NONE	NONE	NONE	
PAVEMENT STRENGTH - WHEEL LOADING (POUNDS)	S 60,000	60,000	60,000	
	D 120,000	120,000	120,000	
	2D 170,000	170,000	170,000	
PAVEMENT STRENGTH - PCN	UNKNOWN	UNKNOWN	UNKNOWN	
RUNWAY GRADIENT	-0.7%	-0.7%	-0.7%	
PERCENT WIND COVERAGE (ALL WEATHER)	KNOTS 98.30%	98.30%	98.30%	
	13 KNOTS 99.22%	99.22%	99.22%	
	16 KNOTS 99.85%	99.85%	99.85%	
	20 KNOTS 99.97%	99.97%	99.97%	
RUNWAY LENGTH	8,004'	8,004'	8,004'	
RUNWAY WIDTH	150'	150'	150'	
RUNWAY END - COORDINATES (NAD 83)	LAT. 30° 47' 22.91"	30° 46' 4.65"	30° 46' 4.65"	
	LONG. 86° 31' 26.82"	86° 31' 12.45"	86° 31' 12.45"	
RUNWAY END - ELEVATION (NAVD 88)	213.5'	153.6'	153.6'	
DISPLACED THRESHOLD - LENGTH	N/A	N/A	N/A	
DISPLACED THRESHOLD - COORDINATES (NAD 83)	LAT. N/A	N/A	N/A	
	LONG. N/A	N/A	N/A	
DISPLACED THRESHOLD - ELEVATION (NAVD 88)	N/A	N/A	N/A	
RUNWAY LIGHTING	MIRL	MIRL	MIRL	
RUNWAY PROTECTION ZONE (RPZ)	1000x1700x1510'	1000x2500x1750'	500x1700x1010'	
RUNWAY MARKING	PRECISION	PRECISION	NON-PRECISION	
14 CFR PART 77 APPROACH CATEGORY	50.1 PIR	SAME	34.1 D	
APPROACH TYPE	PRECISION	PRECISION	NON-PRECISION	
VISIBILITY MINIMUMS	3/4 MILE	1/2 MILE	1 MILE	
AERONAUTICAL SURVEY	VERTICALLY GUIDED	VERTICALLY GUIDED	VERTICALLY GUIDED	
RUNWAY DEPARTURE SURFACE	YES	YES	YES	
RUNWAY SAFETY AREA (RSA)	WIDTH 500'	500'	500'	
	LENGTH BEYOND RWY END 1000'	1000'	1000'	
RUNWAY OBJECT FREE AREA (ROFA)	WIDTH 800'	800'	800'	
	LENGTH BEYOND RWY END 1000'	1000'	1000'	
RUNWAY OBSTACLE FREE ZONE (ROFZ)	WIDTH 400'	400'	400'	
	LENGTH BEYOND RWY END 200'	200'	200'	
PRECISION OBSTACLE FREE ZONE (POFZ)	WIDTH N/A	800'	N/A	
	LENGTH BEYOND RWY END N/A	200'	N/A	
THRESHOLD SITING SURFACE (TSS)	20:1 (TYPE 4) ¹	34:1 (TYPE 5) ¹	20:1 (TYPE 4) ¹	
VISUAL AND INSTRUMENT NAVAIDS	ILS, LOC, GS, RNAV (GPS), V4R	ILS, LOC, GS, RNAV (GPS), PAPI	ILS, LOC, GS, RNAV (GPS), PAPI	RNAV (GPS), V4R
TOUCHDOWN ZONE ELEVATION (NAVD 88)	213.5'	SAME	162.6'	SAME

- ENGINEERING BRIEF #99, CHANGES TO TABLE 3-2
- SEE SHEETS 6-8 FOR TSS PENETRATIONS
- RUNWAY MEETS LINE OF SIGHT REQUIREMENT

MODIFICATION TO STANDARDS			
DESCRIPTION	STANDARD TO BE MODIFIED	AIRSPACE CASE NO.	APPROVAL DATE
RUNWAY 17 END DOES NOT MEET LONGITUDE SLOPE STANDARD FOR LAST 1/4 OF RUNWAY	AC 150/5300-13A PARAGRAPH 313		
EXISTING RUNWAY PAVEMENT CROWN 25 FEET WEST OF CENTERLINE	AC 150/5300-13A PARAGRAPH 313		
NORTHERN 1,800 FEET OF PARALLEL TAXIWAY PENETRATES PART 77 SURFACE	14 CFR PART 77.19		

DESCRIPTION	EXISTING	FUTURE	ULTIMATE
PROPERTY LINE			
RUNWAY SAFETY AREA	RSR		N/A
RUNWAY OBJECT FREE AREA	ROFA		N/A
RUNWAY OBSTACLE FREE ZONE	ROFZ		N/A
PRECISION OBSTACLE FREE ZONE	N/A		
RUNWAY PROTECTION ZONE			
TAXIWAY SAFETY AREA	TSA		N/A
TAXIWAY OBJECT FREE AREA	TOFA		N/A
35' BUILDING RESTRICTION LINE	BRL		N/A
PART 77 SURFACE	77		N/A
AIRFIELD PAVEMENT			
BUILDINGS			
ROADWAY/PARKING			
UNPAVED ROADWAY/PARKING			N/A
AIRFIELD LIGHT			N/A
VASI			N/A
PAPI			N/A
ARP			N/A
BEACON			N/A
WINDCONE			N/A
ASOS			N/A
TREES			N/A
FENCE	X	XX	XXX
POWER POLE			N/A
LIGHT POLE			N/A
SURVEY MONUMENT	PACS/SACS		N/A
DRAINAGE DITCH			N/A
GROUND CONTOURS	-60		N/A
AIRCRAFT HOLDING POSITION			N/A
THRESHOLD SITING SURFACE	TSS	F-TSS	U-TSS
DEPARTURE SURFACE	DEP		N/A
GLIDE PATH QUALIFICATION SURFACE	GQS		N/A
CONSERVATION EASEMENT			N/A
POTENTIAL LAND RELEASE	N/A		

REVISIONS

NO.	DESCRIPTION	DATE

DATE ISSUED: FEBRUARY 2019
REVIEWED BY: GRH, KRI, TJM
DRAWN BY: JEM
DESIGNED BY: JEM

PROJECT NUMBER
201-0251-005

© 2019 RS&H, INC.

AIRPORT LAYOUT PLAN

SHEET NUMBER

3 OF 15

DRAFT



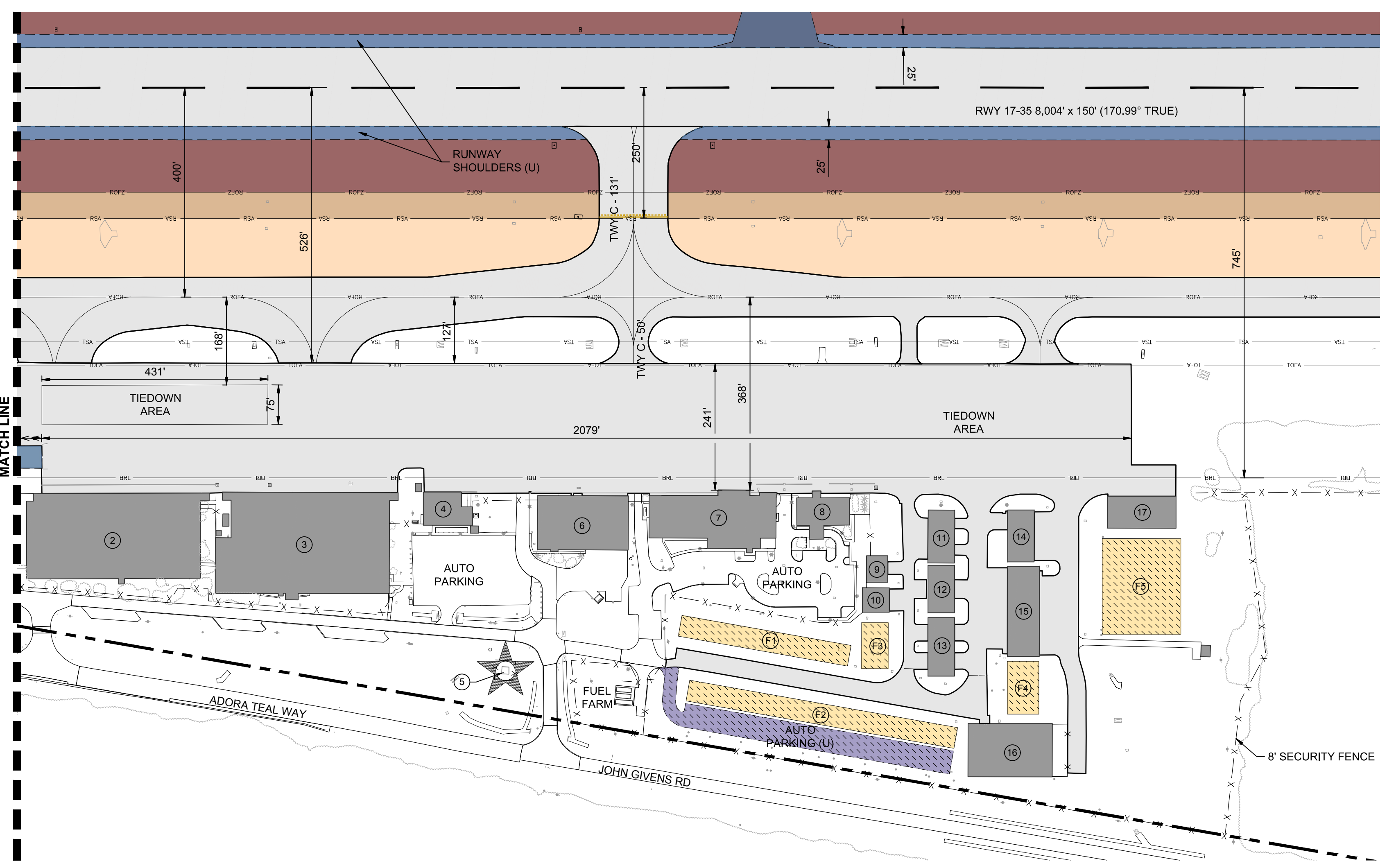
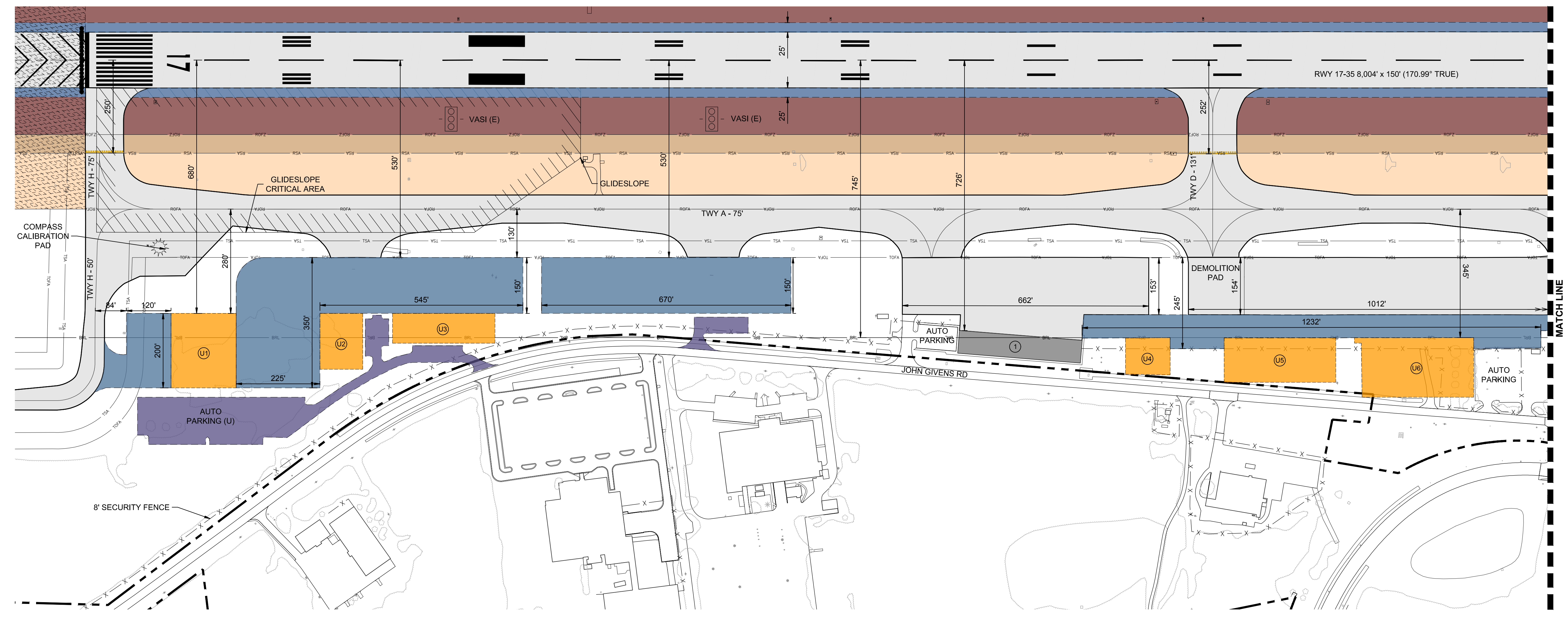
BOB SIKES AIRPORT
CRESTVIEW, FLORIDA



RS&H, Inc.
10748 Deerwood Park Blvd South
Jacksonville, Florida 32256
904-256-2500 FAX 904-256-2501
www.rsandh.com

AIRPORT LAYOUT PLAN

CONSULTANTS



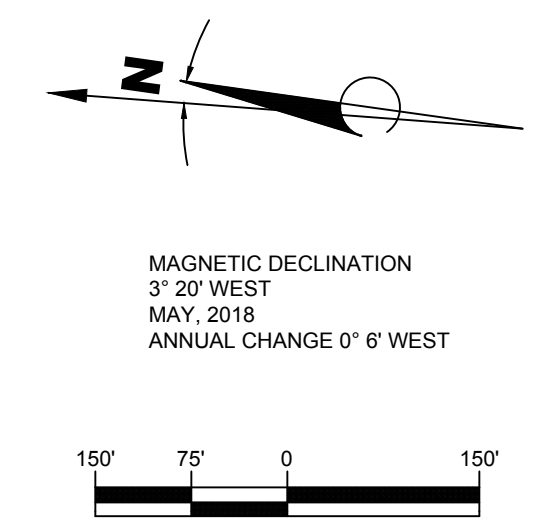
EXISTING BUILDING LEGEND		
BUILDING NO	BUILDING DESCRIPTION	ELEVATION HIGHEST POINT
1	HANGAR	245' EST
2	HANGAR	218' EST
3	HANGAR	218' EST
4	AIRPORT OFFICES	176.1'
5	ARFF STATION	181.4'
6	HANGARS	190' EST
7	FBO TERMINAL	185.6'
8	HANGAR	176.6'
9	HANGAR	181.5'
10	HANGAR	180.0'
11	HANGAR	175.5'
12	HANGAR	185' EST
13	HANGAR	184.9'
14	HANGAR	187' EST
15	HANGAR	184.7'
16	HANGAR	188.6'

NOTE: ALL ELEVATIONS ARE EXPRESSED IN FEET ABOVE MEAN SEA LEVEL (MSL)

FUTURE BUILDING LEGEND		
BUILDING NO	BUILDING DESCRIPTION	ELEVATION HIGHEST POINT
F1	T-HANGAR	180' EST
F2	T-HANGAR	180' EST
F3	HANGAR	185' EST
F4	HANGAR	185' EST
F5	HANGAR	185' EST

ULTIMATE BUILDING LEGEND		
BUILDING NO	BUILDING DESCRIPTION	ELEVATION HIGHEST POINT
U1	HANGAR	235' EST
U2	HANGAR	235' EST
U3	HANGAR	235' EST
U4	HANGAR	210' EST
U5	HANGAR	220' EST
U6	HANGAR	205' EST

NOTE: FUTURE AND ULTIMATE BUILDING ELEVATIONS ARE ESTIMATED.



DESCRIPTION	EXISTING	FUTURE	ULTIMATE
PROPERTY LINE			
RUNWAY SAFETY AREA	ROSA		N/A
RUNWAY OBJECT FREE AREA	ROFA		N/A
RUNWAY OBSTACLE FREE ZONE	ROFZ		N/A
PRECISION OBSTACLE FREE ZONE			
RUNWAY OBSTACLE FREE ZONE			
TAXIWAY SAFETY AREA	TSA		N/A
TAXIWAY OBJECT FREE AREA	TOFA		N/A
35' BUILDING RESTRICTION LINE	BRL		N/A
AIRFIELD PAVEMENT			
ROADWAY/PARKING			
UNPAVED ROADWAY/PARKING			N/A
AIRFIELD LIGHT			N/A
VASI			N/A
PAPI			N/A
AIRPORT BEACON			N/A
WINDCONE			N/A
TREES			N/A
FENCE			N/A
POWER POLE			N/A
LIGHT POLE			N/A
AIRCRAFT HOLDING POSITION			N/A

REVISIONS

NO.	DESCRIPTION	DATE

DATE ISSUED: FEBRUARY 2019
REVIEWED BY: GRH, KRI, TJM
DRAWN BY: JEM
DESIGNED BY: JEM

PROJECT NUMBER
201-0251-005

© 2019 RS&H, INC.

SHEET TITLE
WEST TERMINAL AREA PLAN

SHEET NUMBER

4 OF 15

DRAFT



BOB SIKES AIRPORT
CRESTVIEW, FLORIDA



RS&H, Inc.
10748 Deerwood Park Blvd South
Jacksonville, Florida 32256
904-256-2500 FAX 904-256-2501
www.rsandh.com

AIRPORT LAYOUT PLAN

CONSULTANTS

REVISIONS

NO.	DESCRIPTION	DATE

DATE ISSUED: FEBRUARY 2019
REVIEWED BY: GRH, KRI, TJM
DRAWN BY: JEM
DESIGNED BY: JEM

PROJECT NUMBER
201-0251-005

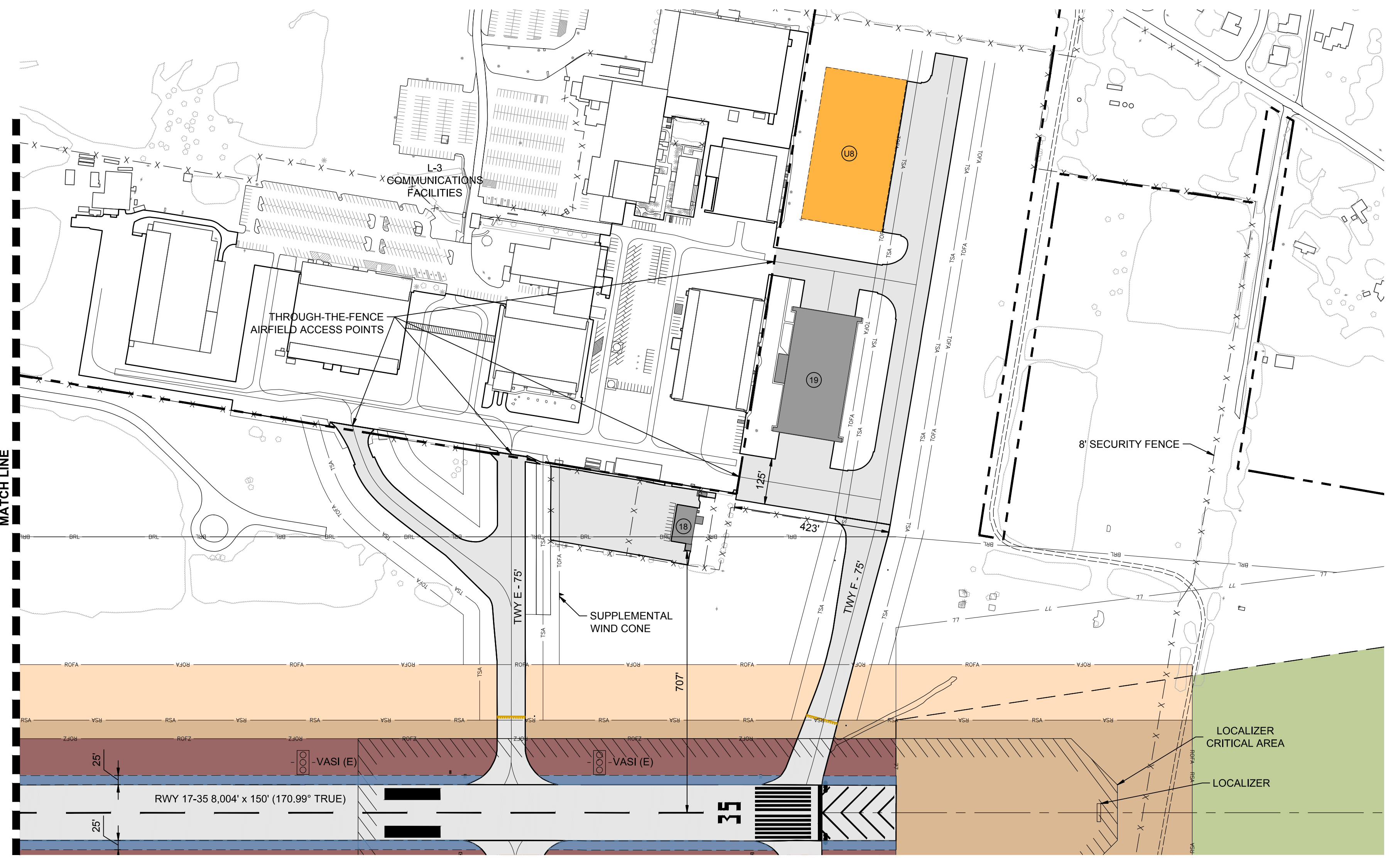
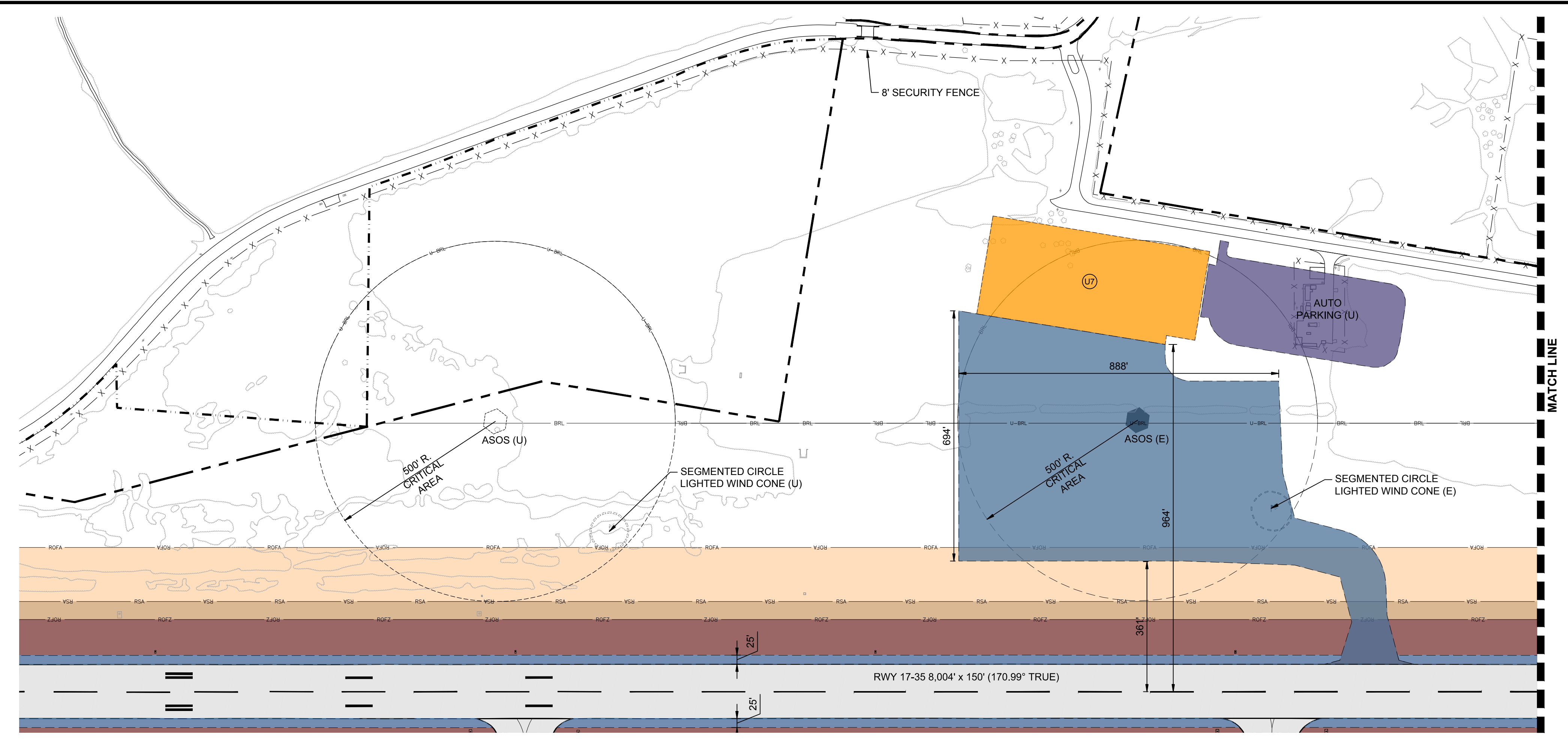
© 2019 RS&H, INC.

SHEET TITLE
EAST DEVELOPMENT AREA PLAN

SHEET NUMBER

5 OF 15

DRAFT

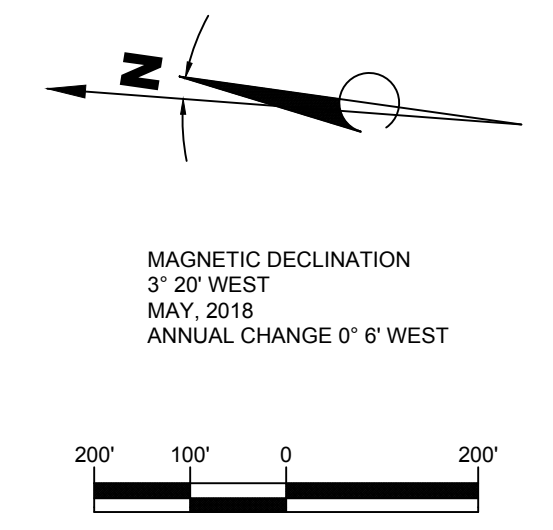


EXISTING BUILDING LEGEND		
BUILDING NO	BUILDING DESCRIPTION	ELEVATION HIGHEST POINT
17	STORAGE	169.7'
18	HANGAR	204.2'

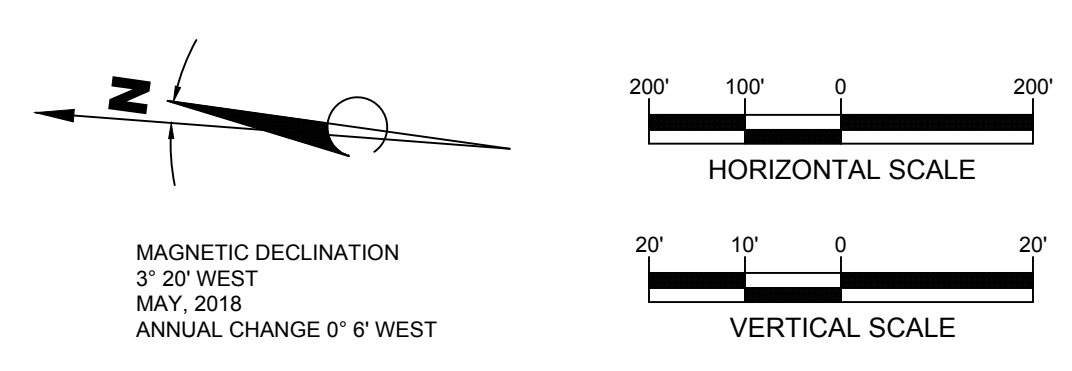
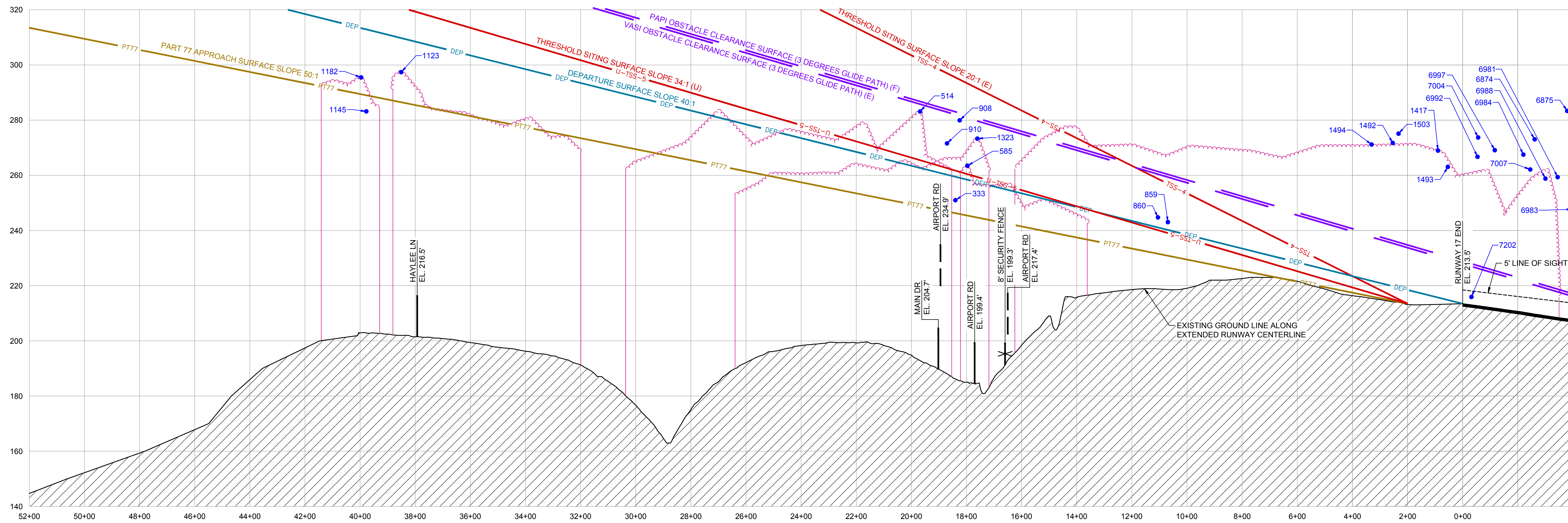
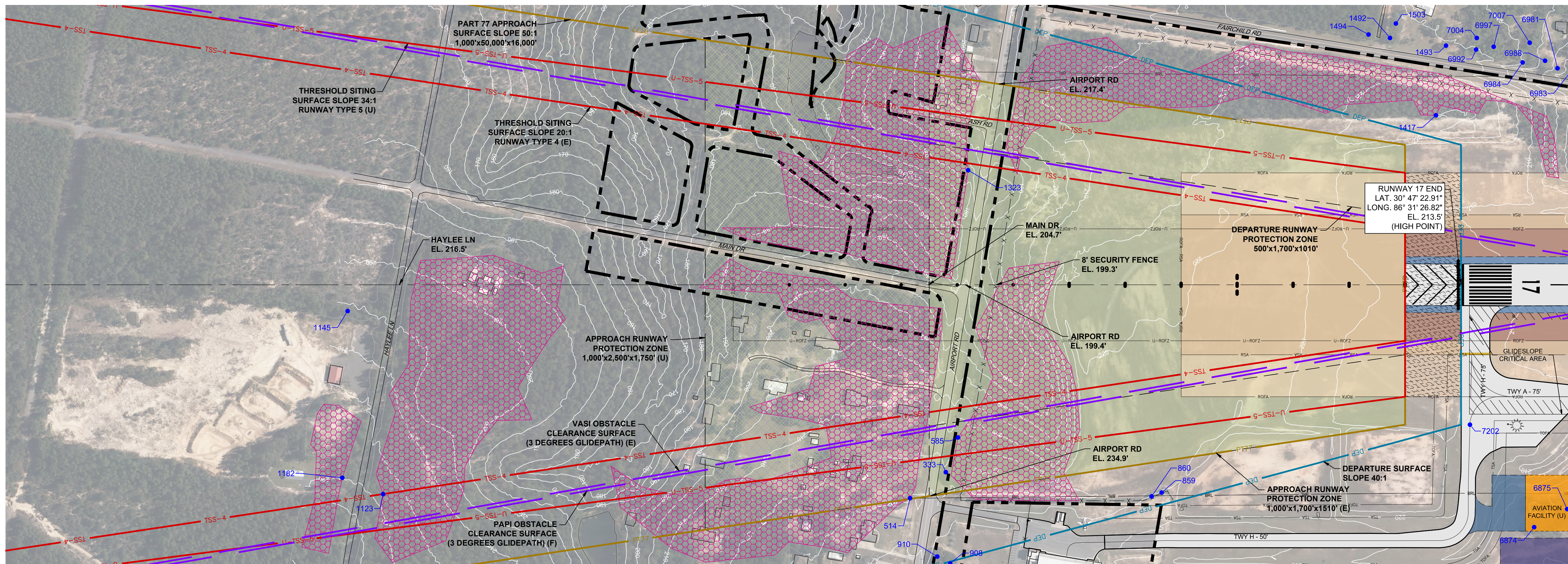
NOTE: ALL ELEVATIONS ARE EXPRESSED IN FEET ABOVE MEAN SEA LEVEL (MSL)

ULTIMATE BUILDING LEGEND		
BUILDING NO	BUILDING DESCRIPTION	ELEVATION HIGHEST POINT
U7	HANGAR	220' EST
U8	HANGAR	190' EST

NOTE: FUTURE AND ULTIMATE BUILDING ELEVATIONS ARE ESTIMATED.



DESCRIPTION	EXISTING	FUTURE	
		ULTIMATE	ULTIMATE
PROPERTY LINE	---	---	---
RUNWAY SAFETY AREA	ROSA	---	N/A
RUNWAY OBJECT FREE AREA	ROFA	---	N/A
RUNWAY OBSTACLE FREE ZONE	ROFZ	---	N/A
PRECISION OBSTACLE FREE ZONE	POFZ	---	---
RUNWAY OBSTACLE FREE ZONE	ROFZ	---	---
TAXIWAY SAFETY AREA	TSA	---	N/A
TAXIWAY OBJECT FREE AREA	TOFA	---	N/A
35' BUILDING RESTRICTION LINE	BRL	---	N/A
AIRFIELD PAVEMENT	---	---	---
BUILDINGS	---	---	---
ROADWAY/PARKING	---	---	---
UNPAVED ROADWAY/PARKING	---	---	N/A
AIRFIELD LIGHT	•	---	N/A
VASI	---	---	N/A
PAPI	---	---	N/A
AIRPORT BEACON	★	---	N/A
WINDCONE	---	---	N/A
TREES	---	---	N/A
FENCE	-X-X-X-	XX-XXX-	---
POWER POLE	•	---	N/A
LIGHT POLE	•	---	N/A
AIRCRAFT HOLDING POSITION	---	---	N/A



BOB SIKES AIRPORT
CRESTVIEW, FLORIDA



RS&H, Inc.
10748 Deerwood Park Blvd South
Jacksonville, Florida 32256
904-256-2500 FAX 904-256-2501
www.rsandh.com

AIRPORT LAYOUT PLAN

CONSULTANTS

REVISIONS

NO.	DESCRIPTION	DATE

DATE ISSUED: FEBRUARY 2019
REVIEWED BY: GRH, KRI, TJM
DRAWN BY: JEM
DESIGNED BY: JEM

PROJECT NUMBER
201-0251-005

© 2019 RS&H, INC.

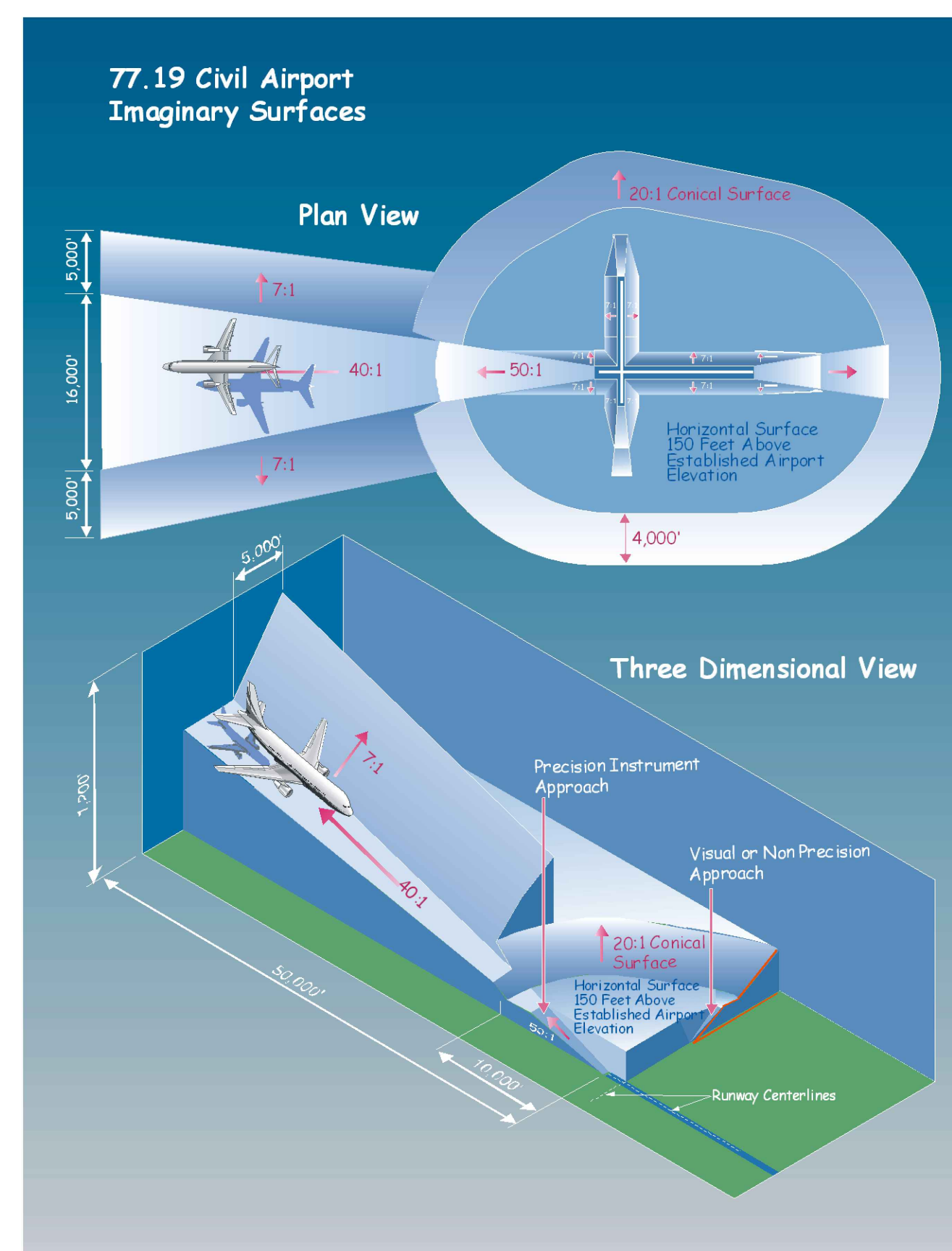
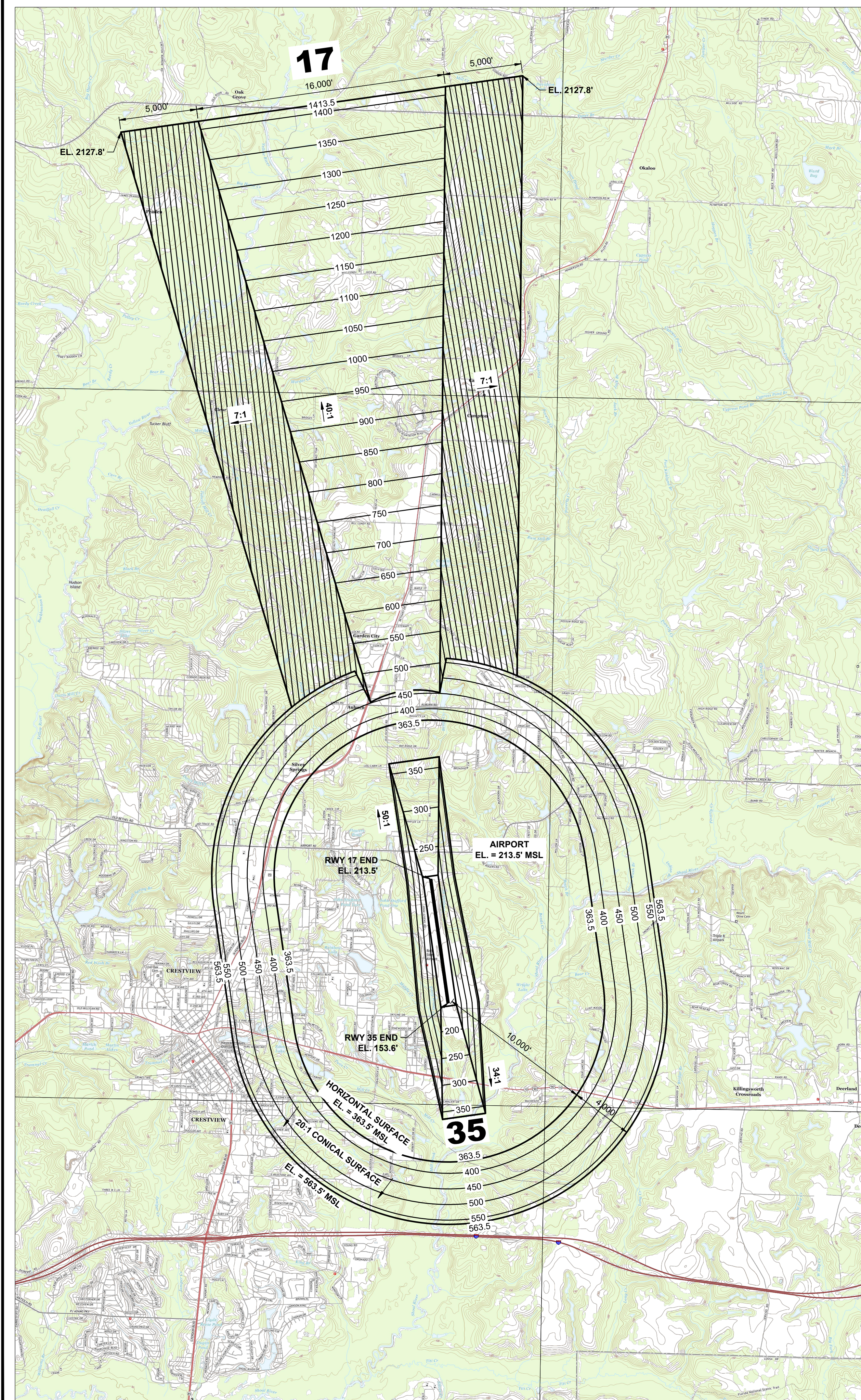
SHEET TITLE

INNER APPROACH PLAN AND PROFILE RUNWAY 17

SHEET NUMBER

6 OF 15

DRAFT



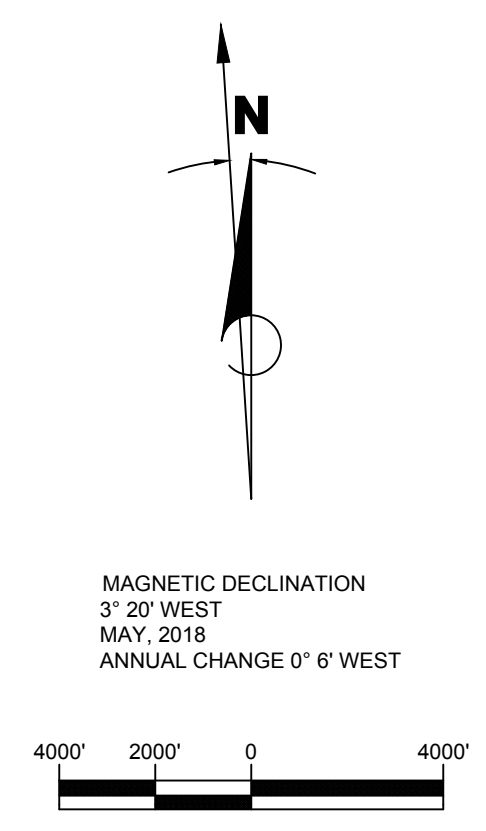
DIM	ITEM	DIMENSIONAL STANDARDS (FEET)					
		VISUAL RUNWAY		NON-PRECISION INSTRUMENT RUNWAY		PRECISION INSTRUMENT RUNWAY	
		A	B	A	B C D		
A	WIDTH OF PRIMARY SURFACE AND APPROACH SURFACE AT INNER END	250	500	500	500	1,000	1,000
B	RADIUS OF HORIZONTAL SURFACE	5,000	5,000	5,000	10,000	10,000	10,000
		VISUAL APPROACH		NON-PRECISION INSTRUMENT APPROACH		PRECISION INSTRUMENT RUNWAY	
		A	B	A	B C D		
C	APPROACH SURFACE WIDTH AT END	1,250	1,500	2,000	3,500	4,000	16,000
D	APPROACH SURFACE LENGTH	5,000	5,000	5,000	10,000	10,000	*
E	APPROACH SLOPE	20:1	20:1	20:1	34:1	34:1	*

A - UTILITY RUNWAYS
 B - RUNWAYS LARGER THAN UTILITY
 C - VISIBILITY MINIMUMS GREATER THAN 3/4 MILE
 D - VISIBILITY MINIMUMS AS LOW AS 3/4 MILE
 * - PRECISION INSTRUMENT APPROACH SLOPE IS 50:1 FOR INNER 10,000 FEET AND 40:1 FOR AN ADDITIONAL 40,000 FEET

OBSTRUCTION TABLE							
OBJECT NO.	OBJECT DESCRIPTION	GROUND SURFACE ELEVATION (FT.)	OBJECT TOP ELEVATION (FT.)	PART 77 SURFACE ELEVATION (FT.)	PART 77 CLEARANCE (+ PENETRATE) (- CLEAR)	PART 77 SURFACE VIOLATION	PROPOSED DISPOSITION
SEE SHEET 9 FOR PART 77 OBSTRUCTIONS							

1. OBSTRUCTION SURVEY COMPLETED BY GPI GEOSPATIAL INC., DECEMBER, 2017.
2. USGS QUADRANGLE BASE MAPS OBTAINED APRIL 2018
3. SEE INNER APPROACH PLAN AND PROFILE SHEETS FOR CLOSE-IN OBSTRUCTIONS.

ZONING RESTRICTIONS
 OKALOOSA COUNTY, FLORIDA - CODE OF ORDINANCES, APPENDIX E - LAND DEVELOPMENT CODE, CHAPTER 3 - OVERLAY ZONES, 3.02.00 - AIRSPACE PROTECTION;
 OKALOOSA COUNTY, FLORIDA - CODE OF ORDINANCES, APPENDIX E - LAND DEVELOPMENT CODE, CHAPTER 3 - OVERLAY ZONES, 3.03.00 - BOB SIKES AIRPORT INFLUENCE AREA.
 SOURCE: OKALOOSA COUNTY, FLORIDA - CODE OF ORDINANCES, VERSION: FEBRUARY 21, 2018



BOB SIKES AIRPORT
 CRESTVIEW, FLORIDA



RS&H, Inc.
 10748 Deerwood Park Blvd South
 Jacksonville, Florida 32256
 904-256-2500 FAX 904-256-2501
 www.rsandh.com

AIRPORT LAYOUT PLAN

CONSULTANTS

REVISIONS

NO.	DESCRIPTION	DATE

DATE ISSUED: FEBRUARY 2019
 REVIEWED BY: GRH, KRI, TJM
 DRAWN BY: JEM
 DESIGNED BY: JEM

PROJECT NUMBER
201-0251-005

© 2019 RS&H, INC.
 SHEET TITLE

PART 77 AIRSPACE DRAWING

SHEET NUMBER

10 OF 15

DRAFT



BOB SIKES AIRPORT
CRESTVIEW, FLORIDA



RS&H, Inc.
10748 Deerwood Park Blvd South
Jacksonville, Florida 32256
904-256-2500 FAX 904-256-2501
www.rsandh.com

AIRPORT LAYOUT PLAN

CONSULTANTS

REVISIONS

NO.	DESCRIPTION	DATE

DATE ISSUED: FEBRUARY 2019
REVIEWED BY: GRH, KRI, TJM
DRAWN BY: JEM
DESIGNED BY: JEM

PROJECT NUMBER
201-0251-005

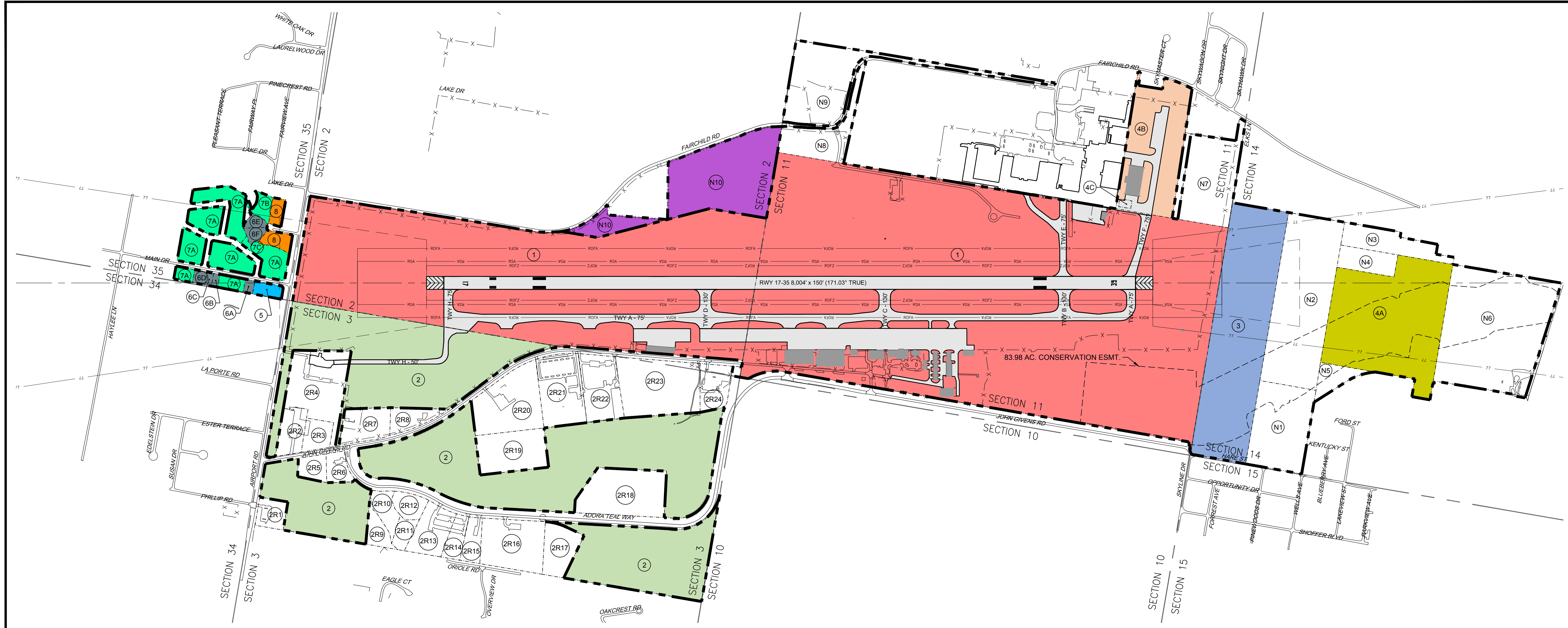
© 2019 RS&H, INC.

SHEET TITLE
EXHIBIT "A"
AIRPORT
PROPERTY
INVENTORY
MAP

SHEET NUMBER

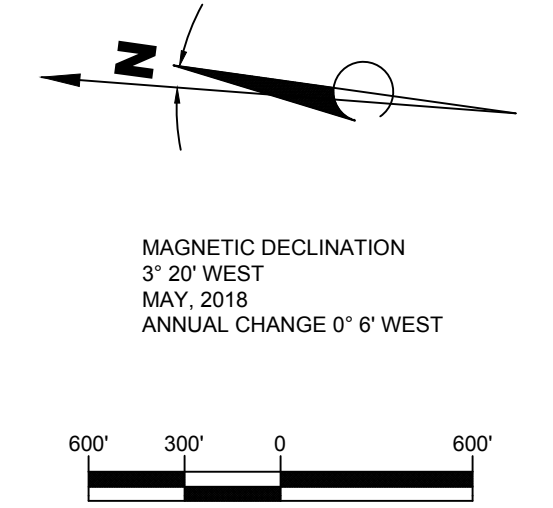
14 OF 15

DRAFT



DESCRIPTION	EXISTING
PROPERTY LINE	---
PARCEL LINE	---
SECTION LINE	---
RUNWAY SAFETY AREA	— RSA —
RUNWAY OBJECT FREE AREA	— ROFA —
RUNWAY OBJECT FREE ZONE	— ROFZ —
RUNWAY PROTECTION ZONE	---
PART 77 SURFACE	77
AIRFIELD PAVEMENT	---
BUILDINGS	---
ROADWAY/PARKING	---
FENCE	-X-X-X-

PROPERTY LEGEND	
PARCEL 1	[Red Box]
PARCEL 2	[Green Box]
PARCEL 3	[Blue Box]
PARCEL 4A	[Yellow Box]
PARCEL 4B & 4C	[Orange Box]
PARCEL 5	[Light Blue Box]
PARCEL 6A, 6B, 6C, 6D, 6E, & 6F	[Dark Green Box]
PARCEL 7A, 7B, & 7C	[Light Green Box]
PARCEL 8	[Orange Box]
FUTURE ACQUISITION	[Purple Box]



OKALOOSA COUNTY BOARD OF COUNTY COMMISSIONERS

APPROVED _____ DATE _____
AIRPORTS DIRECTOR - TRACY STAGE, A.A.E.

PREPARED BY:
RS&H
RS&H, Inc.
10748 Deerwood Park Blvd South
Jacksonville, Florida 32256
904-256-2500 FAX 904-256-2501
www.rsandh.com

APPROVED _____ DATE _____
GARETH R. HANLEY, AICP, CM

